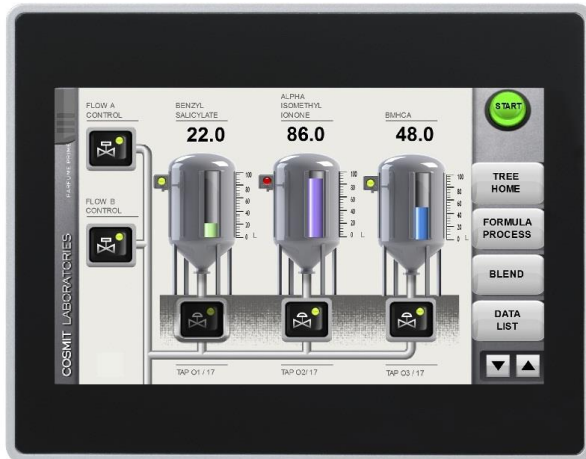


UniOP eTOP507M

The UniOP eTOP Series 500 HMI products combine state-of-the-art features and top performance with an outstanding design. They are the ideal choice for all demanding HMI applications including factory and building automation.

The eTOP507M is a high performance product created for demanding HMI applications. It features features a bright 7" TFT widescreen (16:9) display with a fully dimmable LED backlight. The CPU and the memory size is enhanced in comparison to standard products.

The JMobile software offers full vector graphic capabilities and plenty of connectivity options.



- 7" TFT color display, LED backlight
- 800x480 pixel (WVGA) resolution, 64K colors
- Resistive touchscreen
- 2 Ethernet ports with switch function
- 2 USB Host ports
- SD Card Slot
- Connection to fieldbus systems and I/O using optional plug-in modules
- Slim design. Mounting depth less than 50mm

Highlights

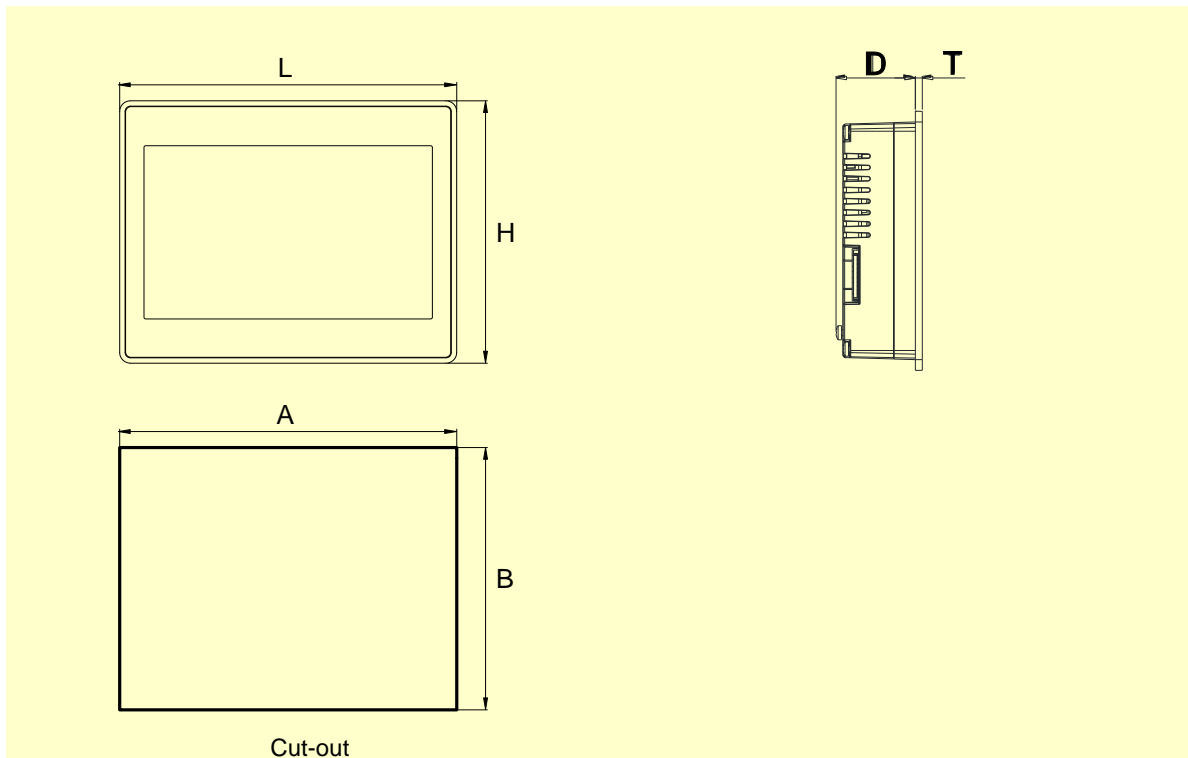
The eTOP Series 500 HMI panels have been designed to run the JMobile software.

- JMobile runtime included. Full compatibility with JMobile Studio.
- Full vector graphic support. Native support of SVG graphic objects. Transparency and alpha blending.
- Full object dynamics: control visibility and transparency, move, resize, rotate objects on screen. Change properties of basic and complex objects.
- TrueType fonts
- Multilanguage applications. Easily create and manage your applications in multiple languages to meet global requirements. Far East languages are supported. Tools available in JMobile Studio support easy third-party translations and help reducing development and maintenance costs of the application.
- Rich set of state-of-the-art HMI features: graphical presentation of data presentation, data acquisition, alarm handling, scheduler and timed actions (daily and weekly schedulers, exception dates), recipe data storage, users and passwords, e-mail and RSS feeds, rotating menus.
- Includes support for a wide selection of communication drivers for factory automation and building automation.
- Multiple drivers communication capability.
- Remote monitoring and control. Client-Server functionality. Mobile clients supported.
- Remote maintenance and support with VNC-based functionality.
- Off-line and on-line simulation of the HMI application with JMobile Studio.
- Powerful scripting language for automating HMI applications. Script debugging improves efficiency in application development.
- Create and print reports to printers and to file.
- Page templates to simplify application design.
- Rich gallery of symbols and objects.
- PDF viewer.

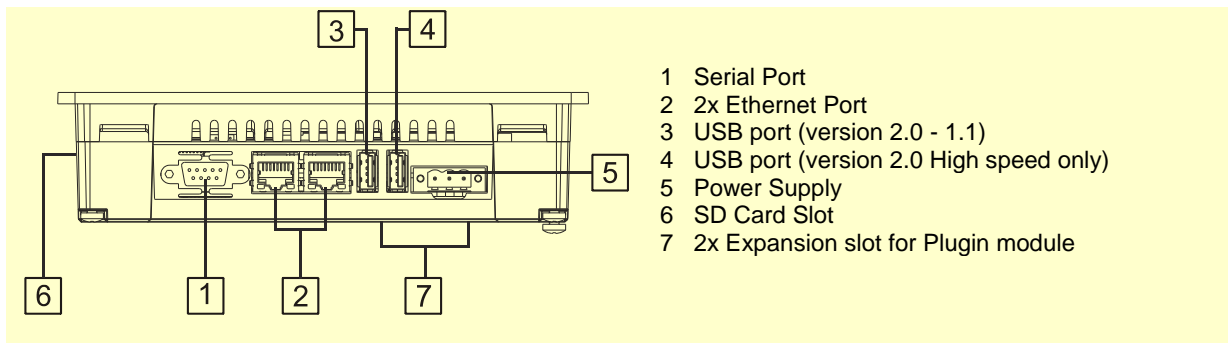
Technical Data

Display		Hardware Real Time Clock	Yes, with battery back-up
Type	TFT	Clock	
Resolution	800x480, WVGA	Screen saver	Yes
Active display area	7" diagonal	Buzzer	Yes, audible feedback for touchscreen
Colors	64K		
Backlight	LED	Ratings	
Brightness	300 Cd/m ² typ.	Power supply voltage	24 Vdc (10 to 32 Vdc)
Dimming	Yes	Current consumption	0.70A at 24Vdc(max.)
		Fuse	Automatic
System Resources		Weight	Approx 1.0 Kg
Operating System	Microsoft Windows CE 6.0	Battery	Rechargeable Lithium battery, not user-replaceable
User memory	256 MB Flash		
RAM	256MB DDR		
		Environmental Conditions	
Operator Interface		Operating temperature	0 to 50 °C (vertical installation)
Touchscreen	Analog resistive	Storage temperature	-20 to +70 °C
LED indicators	1 (dual color)	Operating and storage humidity	5 – 85 % relative humidity, non-condensing
		Protection class	IP66 (front) IP20 (rear)
Interface		Dimensions	
Ethernet	2 10/100 Mbit with integrated Switch	Faceplate LxH	187x147 mm (7.36x5.79")
USB	2 Host Interface (1 version 2.0, 1 version 2.0 and 1.1)	Cutout AxB	176x136 mm (6.93x5.35")
Serial	RS-232, RS-485, RS-422, software configurable	Depth D+T	47+4 mm (1.85+0.16")
Expansion Slot	2 Optional plug-in		
Memory Card	SD Card Slot	Approvals	
		CE	Emission EN 61000-6-4 Immunity EN 61000-6-2 for installation in industrial environments
Functionality		DNV	DNV Type Approval Certificate
Vector graphics	Yes, includes SVG support	UL	cULus Haz. Loc. Class I, Division 2, Groups A,B,C and D.
Object dynamics	Yes. Visibility, opacity, position, size, rotation for most object types.	RCM	RCM mark
TrueType fonts	Yes		
Multiple driver communication	Yes		
Data acquisition and trend presentation	Yes. Flash memory storage limited only by available memory		
Multilanguage	Yes, with runtime language switching.		
Recipes	Yes. Flash memory storage limited only by available memory		
Alarms	Yes		
Historical event list	Yes		
Users and passwords	Yes		

Dimensions



Connections



Ordering Information

Model	Part Number	Description
eTOP507M-White	+ETOP507MU1P1	High performance 7" widescreen TFT color touchscreen with Ethernet and USB interfaces. White front panel. JMobile run-time.
eTOP507M-Silver	+ETOP507MU2P1	High performance 7" widescreen TFT color touchscreen with Ethernet and USB interfaces. Silver front panel. JMobile run-time.
eTOP507M-Black	+ETOP507MU3P1	High performance 7" widescreen TFT color touchscreen with Ethernet and USB interfaces. Black front panel. JMobile run-time.
PROTFOIL-07-GL	R-PROT12	Disposable protection foil for 5.7" and 7" eTOP touch panels (10 pieces).
PROTFOIL-07-UV	R-PROT18	Disposable protection foil for 5.7" and 7" eTOP touch panels (10 pieces). UV resistant.

ptn0463

Ver. 1.1

Copyright © 2015, 2016 Exor International S.p.A. – Verona, Italy

Subject to change without notice

The information contained in this document is provided for informational purposes only. While efforts were made to verify the accuracy of the information contained in this documentation, it is provided "as is" without warranty of any kind.

www.uniop.com