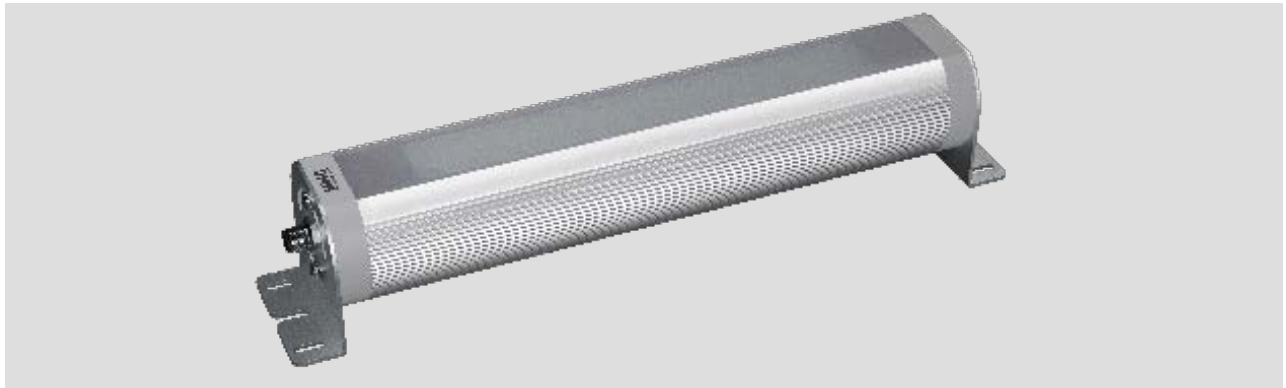


LED Aufbauleuchte LR70 370

LED surface mtd. luminaire LR70 370

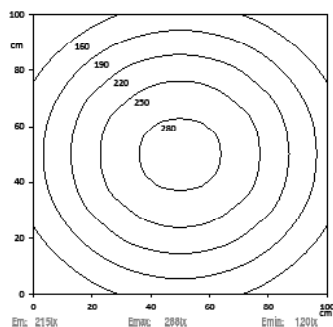
LED Maschinenleuchte in Linienform mit 24V Betriebsspannung
LED machine luminaire line shaped with 24V operating voltage.



Lichtverteilung | Light distribution

Lichtpunkthöhe | Metering distance: 100cm

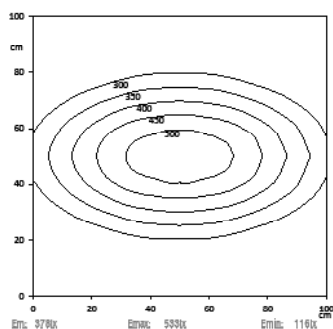
LED LR70 370



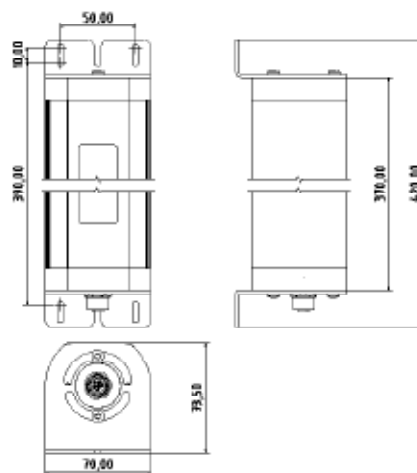
Lichtpunkthöhe | Metering distance: 100cm

LED LR70 370

30°



Dimensionierung | Dimension



Technische Daten | Technical data

Leistung:	8,5W
Power:	8,5W
Anschlusswert:	24V DC (-10%/+15%)
Connection value:	24V DC (-10%/+15%)
Anschluss	Steckverbinder M12
Connection type:	5pol. A codiert
	connector M12
	5pol. A coded
Gehäuse:	Aluminium eloxiert
Housing:	anodized aluminium
Schutzart:	IP67
Protection rating:	IP67
Schutzklasse:	III
Protection class:	III
Abdeckung:	PMMA oder ESGd
Cover:	diffus
	safety glass or PMMA
	diffuse
Farbtreue:	Ra / CRI ≥ 80
Color rendering:	Ra / CRI ≥ 80
Lebensdauer:	min. 60 000h
Durability:	min. 60 000h
Max. Umgebungstemperatur:	-20°C / +45°C
Max. ambient temperature:	-20°C / +45°C
Optik:	120° Optik
Optics:	120° optics
Belegung:	1 = DC (+) br br
Pin assignment:	2 = Eco (DC+) ws wh
	3 = DC (-) bl bl
	4 = NC
	5 = NC

Normen / Approbationen Standards / Approvals

DIN EN 55015 (EMV)
DIN EN 61547 (EMV)
DIN EN 60598-1
DIN EN 62471



Maschinenbau



Medizintechnik



Erneuerbare
Energien



Mobile
Automation



E-Mail

sales@sangel.com



Hotline

+49 521.911750

Nomenklatur Nomenclature	Katalognr. Catalogue no.	Abdeckung Cover	Optik Optics	Lichtstrom Luminous flux	Lichttemperatur Light temp.
-----------------------------	-----------------------------	--------------------	-----------------	-----------------------------	--------------------------------

Drehbare Halterung | Turnable mounting

LED LR70 370 PMMA-d-0-M12-57	15070624	PMMA diffus PMMA diffuse	120° Optik 120° optics	ca. 977 lm	5.700K
LED LR70 370 ESGd-0-M12-57	15070625	ESGd diffus safety glass diffuse	120° Optik 120° optics	ca. 977 lm	5.700K
LED LR70 370 PMMA-d-0-M12-40	15070628	PMMA diffus PMMA diffuse	120° Optik 120° optics	ca. 977 lm	4.000K
LED LR70 370 ESGd-0-M12-40	15070629	ESGd diffus safety glass diffuse	120° Optik 120° optics	ca. 977 lm	4.000K
LED LR70 370 ESGd-30-M12-57	15070663	ESGd diffus safety glass diffuse	30° Optik 30° optics	ca. 977 lm	5.700K
LED LR70 370 ESGd-30-M12-40	15070665	ESGd diffus safety glass diffuse	30° Optik 30° optics	ca. 977 lm	4.000K
LED LR70 370 ESGd-60-M12-57	15070667	ESGd diffus safety glass diffuse	60° Optik 60° optics	ca. 977 lm	5.700K
LED LR70 370 ESGd-60-M12-40	15070669	ESGd diffus safety glass diffuse	60° Optik 60° optics	ca. 977 lm	4.000K

Drehbare Halterung mit zweitem Flansch zum Durchschleifen | Turnable mounting with second flange for loop through

LED LR70 370 PMMA-d-0-M12D-57	15070766	PMMA diffus PMMA diffuse	120° Optik 120° optics	ca. 977 lm	5.700K
LED LR70 370 ESGd-0-M12D-57	15070730	ESGd diffus safety glass diffuse	120° Optik 120° optics	ca. 977 lm	5.700K
LED LR70 370 PMMA-d-0-M12D-40	15070768	PMMA diffus PMMA diffuse	120° Optik 120° optics	ca. 977 lm	4.000K
LED LR70 370 ESGd-0-M12D-40	15070769	ESGd diffus safety glass diffuse	120° Optik 120° optics	ca. 977 lm	4.000K
LED LR70 370 ESGd-30-M12D-57	15070786	ESGd diffus safety glass diffuse	30° Optik 30° optics	ca. 977 lm	5.700K
LED LR70 370 ESGd-60-M12D-57	15070787	ESGd diffus safety glass diffuse	60° Optik 60° optics	ca. 977 lm	5.700K
LED LR70 370 ESGd-30-M12D-40	15070788	ESGd diffus safety glass diffuse	30° Optik 30° optics	ca. 977 lm	4.000K
LED LR70 370 ESGd-60-M12D-40	15070789	ESGd diffus safety glass diffuse	60° Optik 60° optics	ca. 977 lm	4.000K

LED Aufbauleuchte LR70 510

LED surface mtd. luminaire LR70 510

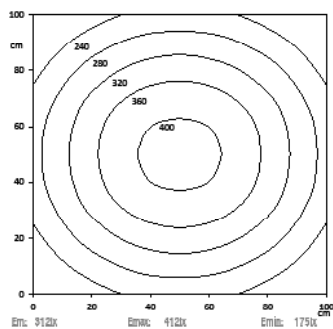
LED Maschinenleuchte in Linienform mit 24V Betriebsspannung
LED machine luminaire line shaped with 24V operating voltage.



Lichtverteilung | Light distribution

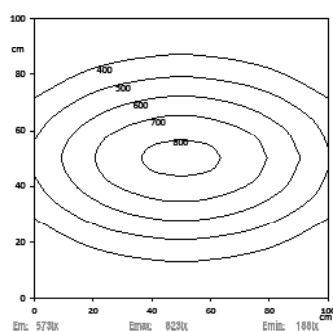
Lichtpunkthöhe | Metering distance: 100cm

LED LR70 510

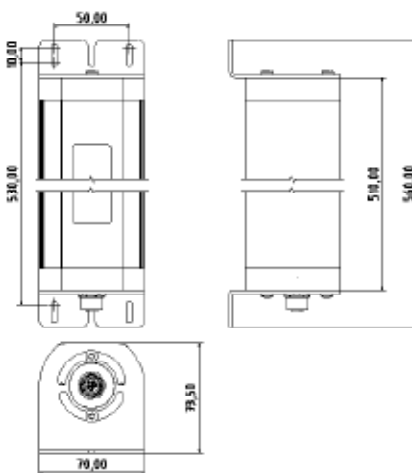


Lichtpunkthöhe | Metering distance: 100cm

LED LR70 510
30°



Dimensionierung | Dimension



Technische Daten | Technical data

Leistung:	13,5W
Power:	13,5W
Anschlusswert:	24V DC (-10%/+15%)
Connection value:	24V DC (-10%/+15%)
Anschluss	Steckverbinder M12
Connection type:	5pol. A codiert connector M12 5pol. A coded
Gehäuse:	Aluminium eloxiert
Housing:	anodized aluminium
Schutzart:	IP67
Protection rating:	IP67
Schutzklasse:	III
Protection class:	III
Abdeckung:	PMMA oder ESGd
Cover:	diffus safety glass or PMMA diffuse
Farbtreue:	Ra / CRI ≥ 80
Color rendering:	Ra / CRI ≥ 80
Lebensdauer:	min. 60 000h
Durability:	min. 60 000h
Max. Umgebungstemperatur:	-20°C / +45°C
Max. ambient temperature:	-20°C / +45°C
Optik:	120° Optik
Optics:	120° optics
Belegung:	1 = DC (+) br br
Pin assignment:	2 = Eco (DC+) ws wh 3 = DC (-) bl bl 4 = NC 5 = NC

Normen / Approbationen Standards / Approvals

DIN EN 55015 (EMV)
DIN EN 61547 (EMV)
DIN EN 60598-1
DIN EN 62471



Nomenklatur Nomenclature	Katalognr. Catalogue no.	Abdeckung Cover	Optik Optics	Lichttemperatur Light temp.
-----------------------------	-----------------------------	--------------------	-----------------	--------------------------------

Drehbare Halterung | Turnable mounting

LED LR70 510 PMMA _d -0-M12-57	15070632	PMMA diffus PMMA diffuse	120° Optik optics, 120	5.700K
LED LR70 510 ESG _d -0-M12-57	15070633	ESG _d diffus safety glass diffuse	120° Optik optics, 120	5.700K
LED LR70 510 PMMA _d -0-M12-40	15070636	PMMA diffus PMMA diffuse	120° Optik optics, 120	4.000K
LED LR70 510 ESG _d -0-M12-40	15070637	ESG _d diffus safety glass diffuse	120° Optik optics, 120	4.000K
LED LR70 510 ESG _d -30-M12-57	15070671	ESG _d diffus safety glass diffuse	30° Optik 30° optics	5.700K
LED LR70 510 ESG _d -30-M12-40	15070673	ESG _d diffus safety glass diffuse	30° Optik 30° optics	4.000K
LED LR70 510 ESG _d -60-M12-57	15070675	ESG _d diffus safety glass diffuse	60° Optik 60° optics	5.700K
LED LR70 510 ESG _d -60-M12-40	15070677	ESG _d diffus safety glass diffuse	60° Optik 60° optics	4.000K

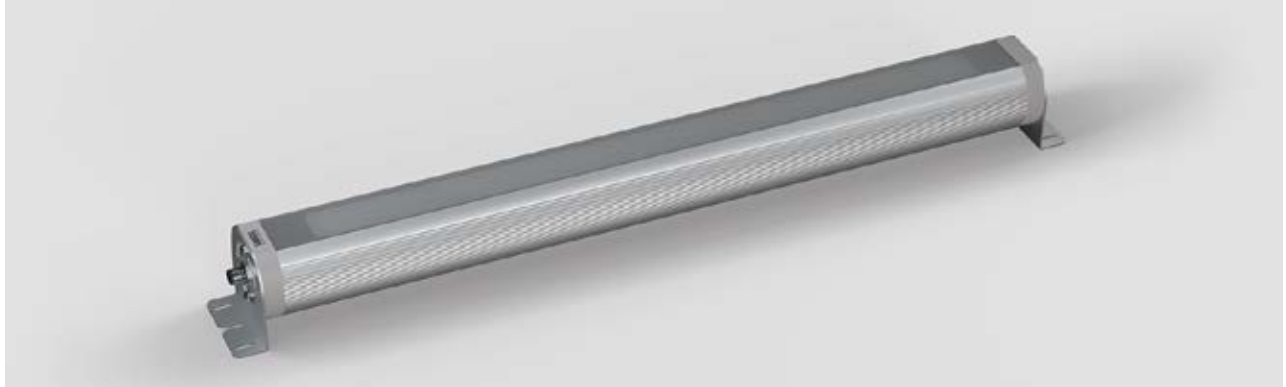
Drehbare Halterung mit zweitem Flansch zum Durchschleifen | Turnable mounting with second flange for loop through

LED LR70 510 PMMA _d -0-M12D-57	15070770	PMMA diffus PMMA diffuse	120° Optik optics, 120	5.700K
LED LR70 510 ESG _d -0-M12D-57	15070731	ESG _d diffus safety glass diffuse	120° Optik optics, 120	5.700K
LED LR70 510 PMMA _d -0-M12D-40	15070772	PMMA diffus PMMA diffuse	120° Optik optics, 120	4.000K
LED LR70 510 ESG _d -0-M12D-40	15070773	ESG _d diffus safety glass diffuse	120° Optik optics, 120	4.000K
LED LR70 510 ESG _d -30-M12D-57	15070790	ESG _d diffus safety glass diffuse	30° Optik 30° optics	5.700K
LED LR70 510 ESG _d -60-M12D-57	15070791	ESG _d diffus safety glass diffuse	60° Optik 60° optics°	5.700K
LED LR70 510 ESG _d -30-M12D-40	15070792	ESG _d diffus safety glass diffuse	30° Optik 30° optics	4.000K
LED LR70 510 ESG _d -60-M12D-40	15070793	ESG _d diffus safety glass diffuse	60° Optik 60° optics	4.000K

LED Aufbauleuchte LR70 650

LED surface mtd. luminaire LR70 650

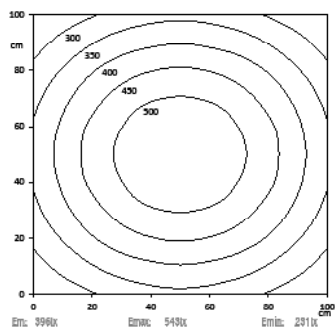
LED Maschinenleuchte in Linienform mit 24V Betriebsspannung
LED machine luminaire line shaped with 24V operating voltage.



Lichtverteilung | Light distribution

Lichtpunkthöhe | Metering distance: 100cm

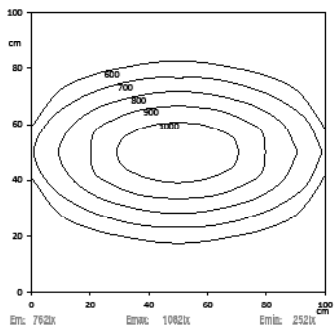
LED LR70 650



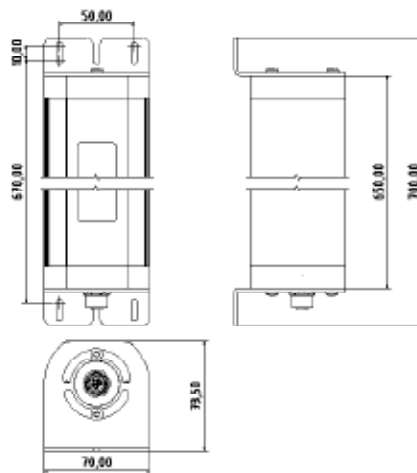
Lichtpunkthöhe | Metering distance: 100cm

LED LR70 650

30°



Dimensionierung | Dimension



Technische Daten | Technical data

Leistung: Power:	17,1W 17,1W
Anschlusswert: Connection value:	24V DC (-10%/+15%) 24V DC (-10%/+15%)
Anschluss Connection type:	Steckverbinder M12 5pol. A codiert connector M12 5pol. A coded
Gehäuse: Housing:	Aluminium eloxiert anodized aluminium
Schutzart: Protection rating:	IP67 IP67
Schutzklasse: Protection class:	III III
Abdeckung: Cover:	PMMA oder ESGd diffus safety glass or PMMA diffuse
Farbtreue: Color rendering:	Ra / CRI ≥ 80 Ra / CRI ≥ 80
Lebensdauer: Durability:	min. 60 000h min. 60 000h
Max. Umgebungs- temperatur: Max. ambient temperature:	-20°C / +45°C -20°C / +45°C
Optik: Optics:	120° Optik 120° optics
Belegung: Pin assignment:	1 = DC (+) br br 2 = Eco (DC+) ws wh 3 = DC (-) bl bl 4 = NC 5 = NC

Normen / Approbationen Standards / Approvals

DIN EN 55015 (EMV)
DIN EN 61547 (EMV)
DIN EN 60598-1
DIN EN 62471



Nomenklatur Nomenclature	Katalognr. Catalogue no.	Abdeckung Cover	Optik Optics	Lichtstrom Luminous flux	Lichttemperatur Light temp.
-----------------------------	-----------------------------	--------------------	-----------------	-----------------------------	--------------------------------

Drehbare Halterung | Turnable mounting

LED LR70 650 PMMA-d-0-M12-57	15070640	PMMA diffus PMMA diffuse	120° Optik optics, 120	ca. 1955 lm	5.700K
LED LR70 650 ESGd-0-M12-57	15070641	ESGd diffus safety glass diffuse	120° Optik optics, 120	ca. 1955 lm	5.700K
LED LR70 650 PMMA-d-0-M12-40	15070644	PMMA diffus PMMA diffuse	120° Optik optics, 120	ca. 1955 lm	4.000K
LED LR70 650 ESGd-0-M12-40	15070645	ESGd diffus safety glass diffuse	120° Optik optics, 120	ca. 1955 lm	4.000K
LED LR70 650 ESGd-30-M12-57	15070679	ESGd diffus safety glass diffuse	30° Optik 30° optics	ca. 1955 lm	5.700K
LED LR70 650 ESGd-30-M12-40	15070681	ESGd diffus safety glass diffuse	30° Optik 30° optics	ca. 1955 lm	4.000K
LED LR70 650 ESGd-60-M12-57	15070683	ESGd diffus safety glass diffuse	60° Optik 60° optics	ca. 1955 lm	5.700K
LED LR70 650 ESGd-60-M12-40	15070685	ESGd diffus safety glass diffuse	60° Optik 60° optics	ca. 1955 lm	4.000K

Drehbare Halterung mit zweitem Flansch zum Durchschleifen | Turnable mounting with second flange for loop through

LED LR70 650 PMMA-d-0-M12D-57	15070774	PMMA diffus PMMA diffuse	120° Optik optics, 120	ca. 1955 lm	5.700K
LED LR70 650 ESGd-0-M12D-57	15070732	ESGd diffus safety glass diffuse	120° Optik optics, 120	ca. 1955 lm	5.700K
LED LR70 650 PMMA-d-0-M12D-40	15070776	PMMA diffus PMMA diffuse	120° Optik optics, 120	ca. 1955 lm	4.000K
LED LR70 650 ESGd-0-M12D-40	15070777	ESGd diffus safety glass diffuse	120° Optik optics, 120	ca. 1955 lm	4.000K
LED LR70 650 ESGd-30-M12D-57	15070794	ESGd diffus safety glass diffuse	30° Optik 30° optics	ca. 1955 lm	5.700K
LED LR70 650 ESGd-60-M12D-57	15070795	ESGd diffus safety glass diffuse	60° Optik 60° optics	ca. 1955 lm	5.700K
LED LR70 650 ESGd-30-M12D-40	15070796	ESGd diffus safety glass diffuse	30° Optik 30° optics	ca. 1955 lm	4.000K
LED LR70 650 ESGd-60-M12D-40	15070797	ESGd diffus safety glass diffuse	60° Optik 60° optics	ca. 1955 lm	4.000K

LED Aufbauleuchte LR70 790

LED surface mtd. luminaire LR70 790

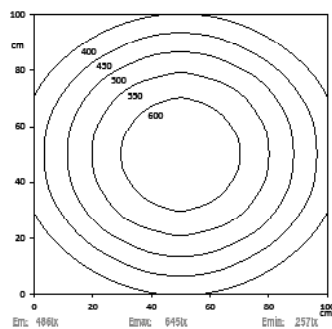
LED Maschinenleuchte in Linienform mit 24V Betriebsspannung
LED machine luminaire line shaped with 24V operating voltage.



Lichtverteilung | Light distribution

Lichtpunkthöhe | Metering distance: 100cm

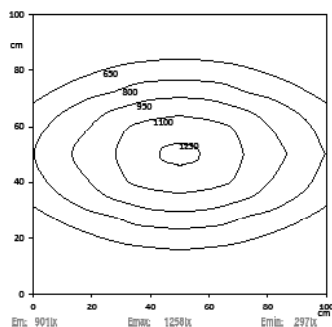
LED LR70 790



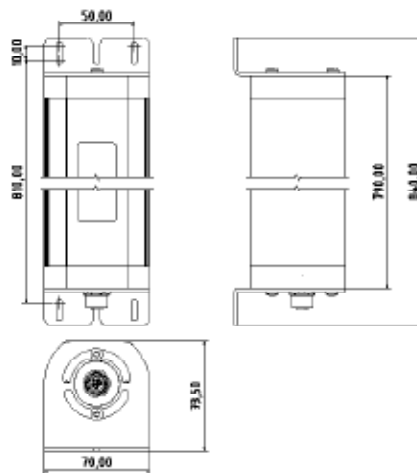
Lichtpunkthöhe | Metering distance: 100cm

LED LR70 790

30°



Dimensionierung | Dimension



Technische Daten | Technical data

Leistung: Power:	22,1W 22,1W
Anschlusswert: Connection value:	24V DC (-10%/+15%) 24V DC (-10%/+15%)
Anschluss Connection type:	Steckverbinder M12 5pol. A codiert connector M12 5pol. A coded
Gehäuse: Housing:	Aluminium eloxiert anodized aluminium
Schutzart: Protection rating:	IP67 IP67
Schutzklasse: Protection class:	III III
Abdeckung: Cover:	PMMA oder ESGd diffus safety glass or PMMA diffuse
Farbtreue: Color rendering:	Ra / CRI ≥ 80 Ra / CRI ≥ 80
Lebensdauer: Durability:	min. 60 000h min. 60 000h
Max. Umgebungstemperatur: Max. ambient temperature:	-20°C / +45°C -20°C / +45°C
Optik: Optics:	120° Optik 120° optics
Belegung: Pin assignment:	1 = DC (+) br br 2 = Eco (DC+) ws wh 3 = DC (-) bl bl 4 = NC 5 = NC

Normen / Approbationen Standards / Approvals

DIN EN 55015 (EMV)
DIN EN 61547 (EMV)
DIN EN 60598-1
DIN EN 62471



Nomenklatur Nomenclature	Katalognr. Catalogue no.	Abdeckung Cover	Optik Optics	Lichtstrom Luminous flux	Lichttemperatur Light temp.
-----------------------------	-----------------------------	--------------------	-----------------	-----------------------------	--------------------------------

Drehbare Halterung | Turnable mounting

LED LR70 790 PMMA-d-0-M12-57	15070648	PMMA diffus PMMA diffuse	120° Optik optics, 120	ca. 2444 lm	5.700K
LED LR70 790 ESGd-0-M12-57	15070649	ESGd diffus safety glass diffuse	120° Optik optics, 120	ca. 2444 lm	5.700K
LED LR70 790 PMMA-d-0-M12-40	15070652	PMMA diffus PMMA diffuse	120° Optik optics, 120	ca. 2444 lm	4.000K
LED LR70 790 ESGd-0-M12-40	15070653	ESGd diffus safety glass diffuse	120° Optik optics, 120	ca. 2444 lm	4.000K
LED LR70 790 ESGd-30-M12-57	15070687	ESGd diffus safety glass diffuse	30° Optik 30° optics	ca. 2444 lm	5.700K
LED LR70 790 ESGd-30-M12-40	15070689	ESGd diffus safety glass diffuse	30° Optik 30° optics	ca. 2444 lm	4.000K
LED LR70 790 ESGd-60-M12-57	15070691	ESGd diffus safety glass diffuse	60° Optik 60° optics	ca. 2444 lm	5.700K
LED LR70 790 ESGd-60-M12-40	15070693	ESGd diffus safety glass diffuse	60° Optik 60° optics	ca. 2444 lm	4.000K

Drehbare Halterung mit zweitem Flansch zum Durchschleifen | Turnable mounting with second flange for loop through

LED LR70 790 PMMA-d-0-M12D-57	15070778	PMMA diffus PMMA diffuse	120° Optik optics, 120	ca. 2444 lm	5.700K
LED LR70 790 ESGd-0-M12D-57	15070733	ESGd diffus safety glass diffuse	120° Optik optics, 120	ca. 2444 lm	5.700K
LED LR70 790 PMMA-d-0-M12D-40	15070780	PMMA diffus PMMA diffuse	120° Optik optics, 120	ca. 2444 lm	4.000K
LED LR70 790 ESGd-0-M12D-40	15070781	ESGd diffus safety glass diffuse	120° Optik optics, 120	ca. 2444 lm	4.000K
LED LR70 790 ESGd-30-M12D-57	15070798	ESGd diffus safety glass diffuse	30° Optik 30° optics	ca. 2444 lm	5.700K
LED LR70 790 ESGd-60-M12D-57	15070799	ESGd diffus safety glass diffuse	60° Optik 60° optics	ca. 2444 lm	5.700K
LED LR70 790 ESGd-30-M12D-40	15070800	ESGd diffus safety glass diffuse	30° Optik 30° optics	ca. 2444 lm	4.000K
LED LR70 790 ESGd-60-M12D-40	15070801	ESGd diffus safety glass diffuse	60° Optik 60° optics	ca. 2444 lm	4.000K

LED Aufbauleuchte LR70 1070

LED surface mtd. luminaire LR70 1070

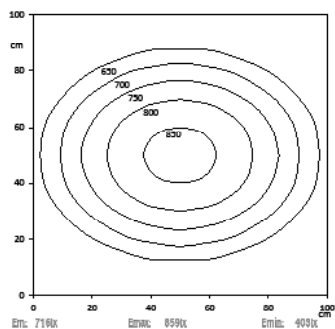
LED Maschinenleuchte in Linienform mit 24V Betriebsspannung
LED machine luminaire line shaped with 24V operating voltage.



Lichtverteilung | Light distribution

Lichtpunkthöhe | Metering distance: 100cm

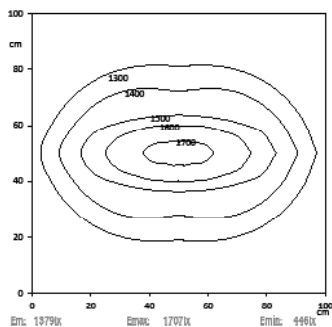
LED LR70 1070



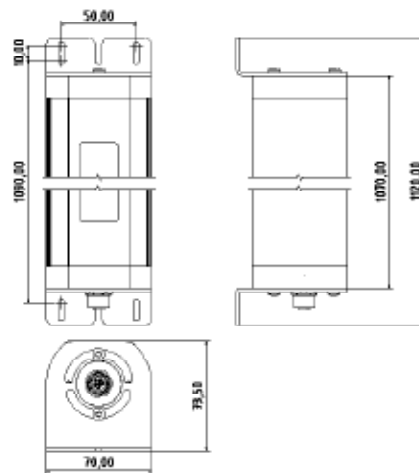
Lichtpunkthöhe | Metering distance: 100cm

LED LR70 1070

30°



Dimensionierung | Dimension



Technische Daten | Technical data

Leistung: Power:	30,7W 30,7W
Anschlusswert: Connection value:	24V DC (-10%/+15%) 24V DC (-10%/+15%)
Anschluss Connection type:	Steckverbinder M12 5pol. A codiert connector M12 5pol. A coded
Gehäuse: Housing:	Aluminium eloxiert anodized aluminium
Schutzart: Protection rating:	IP67 IP67
Schutzklasse: Protection class:	III III
Abdeckung: Cover:	PMMA oder ESGd diffus safety glass or PMMA diffuse
Farbtreue: Color rendering:	Ra / CRI ≥ 80 Ra / CRI ≥ 80
Lebensdauer: Durability:	min. 60 000h min. 60 000h
Max. Umgebungstemperatur: Max. ambient temperature:	-20°C / +45°C -20°C / +45°C
Optik: Optics:	120° Optik 120° optics
Belegung: Pin assignment:	1 = DC (+) br br 2 = Eco (DC+) ws wh 3 = DC (-) bl bl 4 = NC 5 = NC

Normen / Approbationen Standards / Approvals

DIN EN 55015 (EMV)
DIN EN 61547 (EMV)
DIN EN 60598-1
DIN EN 62471



Nomenklatur Nomenclature	Katalognr. Catalogue no.	Abdeckung Cover	Optik Optics	Lichtstrom Luminous flux	Lichttemperatur Light temp.
-----------------------------	-----------------------------	--------------------	-----------------	-----------------------------	--------------------------------

Drehbare Halterung | Turnable mounting

LED LR70 1070 PMMAAd-0-M12-57	15070656	PMMA diffus PMMA diffuse	120° Optik 120° optics	ca. 3421 lm	5.700K
LED LR70 1070 ESGd-0-M12-57	15070657	ESGd diffus safety glass diffuse	120° Optik 120° optics	ca. 3421 lm	5.700K
LED LR70 1070 PMMAAd-0-M12-40	15070660	PMMA diffus PMMA diffuse	120° Optik 120° optics	ca. 3421 lm	4.000K
LED LR70 1070 ESGd-0-M12-40	15070661	ESGd diffus safety glass diffuse	120° Optik 120° optics	ca. 3421 lm	4.000K
LED LR70 1070 ESGd-30-M12-57	15070695	ESGd diffus safety glass diffuse	30° Optik 30° optics	ca. 3421 lm	5.700K
LED LR70 1070 ESGd-30-M12-40	15070697	ESGd diffus safety glass diffuse	30° Optik 30° optics	ca. 3421 lm	4.000K
LED LR70 1070 ESGd-60-M12-57	15070699	ESGd diffus safety glass diffuse	60° Optik 60° optics	ca. 3421 lm	5.700K
LED LR70 1070 ESGd-60-M12-40	15070701	ESGd diffus safety glass diffuse	60° Optik 60° optics	ca. 3421 lm	4.000K

Drehbare Halterung mit zweitem Flansch zum Durchschleifen | Turnable mounting with second flange for loop through

LED LR70 1070 PMMAAd-0-M12D-57	15070782	PMMA diffus PMMA diffuse	120° Optik 120° optics	ca. 3421 lm	5.700K
LED LR70 1070 ESGd-0-M12D-57	15070729	ESGd diffus safety glass diffuse	120° Optik 120° optics	ca. 3421 lm	5.700K
LED LR70 1070 PMMAAd-0-M12D-40	15070784	PMMA diffus PMMA diffuse	120° Optik 120° optics	ca. 3421 lm	4.000K
LED LR70 1070 ESGd-0-M12D-40	15070785	ESGd diffus safety glass diffuse	120° Optik 120° optics	ca. 3421 lm	4.000K
LED LR70 1070 ESGd-30-M12D-57	15070802	ESGd diffus safety glass diffuse	30° Optik 30° optics	ca. 3421 lm	5.700K
LED LR70 1070 ESGd-60-M12D-57	15070803	ESGd diffus safety glass diffuse	60° Optik 60° optics	ca. 3421 lm	5.700K
LED LR70 1070 ESGd-30-M12D-40	15070804	ESGd diffus safety glass diffuse	30° Optik 30° optics	ca. 3421 lm	4.000K
LED LR70 1070 ESGd-60-M12D-40	15070805	ESGd diffus safety glass diffuse	60° Optik 60° optics	ca. 3421 lm	4.000K