

Model Information



■ Main Features

- Ethernet to serial 4 ports RS232 on RJ45
- Virtual Com Port driver for Windows
- Secure Server with latest SSL/AES-256 encryption
- Operation in Driver Mode, TCP/IP and many other
- Quick Configuration over Driver and Browser
- ESD protection on serial port, Ethernet, DC power
- DIN Rail and Wall mount options
- Port expansion over USB

[Contact Online...](#)

NetCom Plus 411 RJ45

(NetCom 411, NetCom 411 PRO)

Quick Link: | [Main Features](#) | [More Pictures](#) | [Overview](#) | [Ethernet Interface](#) | [Serial Interface](#) | [Serial Port Expansion Software](#) | [Installation & Configuration](#) | [Security](#) | [viaVPN Remote Access \(option\)](#) | [Power Requirements](#) | [Housing and Mounting](#) | [Environmental Data](#) | [Standards](#) | [MTBF \(Mean Time Between Failures\)](#) | [Warranty](#) | [Ordering Information](#) | [Options](#) | [Packaging](#) |

■ More Pictures



Click on the thumbnails for the large picture ...

[>Back to top](#)

■ Overview

The Ethernet to Serial Gateways NetCom Plus connect RS232 or RS485 devices to a network running TCP/IP. These Serial Device Servers are rugged industrial devices with metal case and DIN-Rail or wall mounting, further supported by ESD protection on serial ports, power input and USB.

The NetCom+ 411 RJ45 provides four RS232 ports on RJ45 connectors. Use adapters RJ45-to-DB9M with customers Cat5 cables if necessary.

Windows Driver installs Com Ports

The driver for Windows operating system installs Virtual Com Ports. These operate in the same way as built-in ports, but via Ethernet or optional WLAN 802.11b/g/n. Easy-to-use Installation and Management software guides users through the configuration.

High Speed Serial Ports, Low Power

The serial ports allow data rates of up to 460.8kbps in RS232 modes. The ports also allow every non-standard bitrate. See [FAQ](#).

The USB 2.0 port supports [USB-COM Plus modules](#), to add more standard or isolated serial ports. The USB port may also connect external WLAN.

The gateways demand 4W of power or less. The flexible input allows for various sources of customers choice.

Easy Configuration, versatile Operation Modes

NetCom+ are configured over Driver Panels and WEB Browser. This is also possible via serial Port, Telnet or SNMP. NetCom+ provide Driver Mode, TCP/IP or UDP connection, and many operation modes beyond those.

Secure Remote Access for Monitoring

For NetCom Plus series there is a software option using the viaVPN Cloud system (www.viaVPN.com) to be remotely accessed and monitored over Internet. viaVPN provides secure and strongly encrypted access, without any reconfiguration of existing firewalls. The access to the firmware via Ethernet or WLAN is extended by viaVPN over Internet, protected by a VPN tunnel. If the Com port is not occupied by local access, also remote operation over Internet is possible.

■ Ethernet Interface

Speed/Type	100Mbps/10Mbps Auto-detecting
Connector	RJ45 (8P8C) 8 pin
LEDs	Power, WLAN, Ready, Ethernet Link / Speed

[>Back to top](#)

■ Serial Interface

No. of Ports/Type	4 × RS232
Connector	RJ45 (8P8C) 8 pin, uses customers Cat5 cables RJ45-TO-DB9M Adapters to change to DB9 wiring available
Protection	16kV ESD surge protection
Signals	TxD,RxD, RTS,CTS, DTR,DSR, DCD, GND
Data bits	7, 8
Stop bits	1, 2
Parity	None, Even, Odd, Mark, Space
Flow Control	RTS/CTS, XON/XOFF
Baudrate	200 bps to 460.8/500 kbps Supports non-standard baudrates
LEDs	TxD/RxD for each port

[>Back to top](#)

■ Serial Port Expansion

Connector	USB 2.0 High Speed type A, 500mA @5V at front side
Expansion Options	Connect USB-4COM Plus (4 ports) or USB-8COM Plus (8 ports) devices to add more serial ports to NetCom Plus server

[>Back to top](#)

■ Software

Network Protocols	TCP, UDP, Telnet, PPP, DHCP, ICMP, UPnP, HTTP, LPD, SNMP V1/2c/3, DNS, openVPN
Virtual-COM Mode	Driver creates virtual COM ports via NetCom protocol © for Windows XP/7/8/10, Win-Server 2003 to 2008 R2 (x86/x64)
Socket Modes	TCP RAW Server, TCP RAW Client, UDP Mode, Print Server Automatic switching between Virtual-COM and TCP-RAW Server modes.
Tunnel Modes	Null Modem Tunnel and IP Modem
Fixed TTY Drivers	socat Tool, Linux OS

[>Back to top](#)

■ Installation & Configuration

Installation	NetCom Plus Manager automatically finds NetCom Plus devices in the local network.
UPnP	With Network discovery enabled NetCom Plus servers announce their presence via UPnP making their IP visible.
Configuration	via WEB-Browser, Driver Panels, NetCom Manager, serial console, Telnet console or SNMP
Firewall	Virtual-COM mode works through firewalls
Firmware Update	via WEB Browser

[>Back to top](#)

■ Security

Password Protection	for all available configuration options e.g. via WEB-Browser
----------------------------	--

Secure Server	create openVPN™ tunnels, for encrypted transmission of all serial and configuration data using high security SSL/TLS standards.
>Back to top	
■ viaVPN Remote Access (option)	
Connect via Internet	viaVPN technology provides easy and secure access to remotely installed NetCom Plus servers for their configuration or for connecting their virtual COM ports through Internet. With the viaVPN option the NetCom Plus servers are no more limited to only work inside of a local network.
Security	All communications use openVPN-tunnels encrypted by SSL/TLS and AES-256 standards.
Firewall friendly	No Reconfiguration of firewalls is required for viaVPN remote access.
>Back to top	
■ Power Requirements	
Input Voltage	9 - 54V DC
Power Consumption	300 mA @ 12V, 3.6W max
Connector	3-pin Terminal Block
>Back to top	
■ Housing and Mounting	
Case	0.8mm sheet metal
Weight	w/o box 0.25kg; w/h box 0.35kg
Dimensions	115×73×25 mm ³ (W×L×H)
Packaged	150×107×48 mm ³
Mounting	<ul style="list-style-type: none"> • DIN-Rail (optional) • Wall mount (optional)
>Back to top	
■ Environmental Data	
Operating Temp	-20°C - 65°C
Storage Temp	-20°C - 85°C
Ambient Humidity	5-95% non condensing
>Back to top	
■ Standards	
Declarations	CE, FCC
EMI	<ul style="list-style-type: none"> • EN 55022 Class B • EN 61000-3-2: Limits of harmonic current emissions • EN 61000-3-3: Limitation of voltage changes • 47 CFR FCC Part 15 Subpart B
EMS (EN 55024)	<ul style="list-style-type: none"> • EN 61000-4-3: Radiated RFI • EN 61000-4-4: Electrical Fast Transient • EN 61000-4-5: Surge • EN 61000-4-6: Induced RFI • EN 61000-4-8: Power Frequency Magnetic Field • EN 61000-4-11: Power supply dips
ESD	EN 61000-4-2 4kV contact 8kV air for <ul style="list-style-type: none"> • Serial Ports • USB • Ethernet • DC Power connector
>Back to top	
■ MTBF (Mean Time Between Failures)	
MTBF	available soon
Standard	Telcordia (Bellcore) Standard; RelCalc. 5.0 BELL-7
>Back to top	

■ Warranty

Warranty Period 2 years

[>Back to top](#)

■ Ordering Information

6673 NetCom Plus 411 RJ45 (4x RS232, expandable)

[>Back to top](#)

■ Options

6031 Power adapter 110-230V AC to 12V @1A, DC, EU plug

6034 Power adapter 110-230V AC to 12V @1A, DC, US plug

6679 Activate option [viaVPN](#) for secure remote access over Internet

[6692](#) DK-NCP DIN-Rail mounting kit (clamp on rear side)

[6693](#) WK-NCP Wallmount kit

[662](#) DK 35A Plastic DIN-Rail mounting kit

[6062](#) x 4 Set 4 pcs Adapter RJ45-TO-DB9M
Cat5 to Dsub9-male, use own Cat5 cables for attaching

[>Back to top](#)

■ Packaging

Packing list

- NetCom Plus 411 RJ45 Serial Device Server
- Terminal block for Power Supply
- 4 rubber feet for table mode

[>Back to top](#)

* Specifications are subject to change without notice.

* All trademarks and brands are property of their rightful owners.

NetCom Plus 411 RJ45

[>Back](#)





DIN-Rail Kit DK-NCP
[>Back](#)

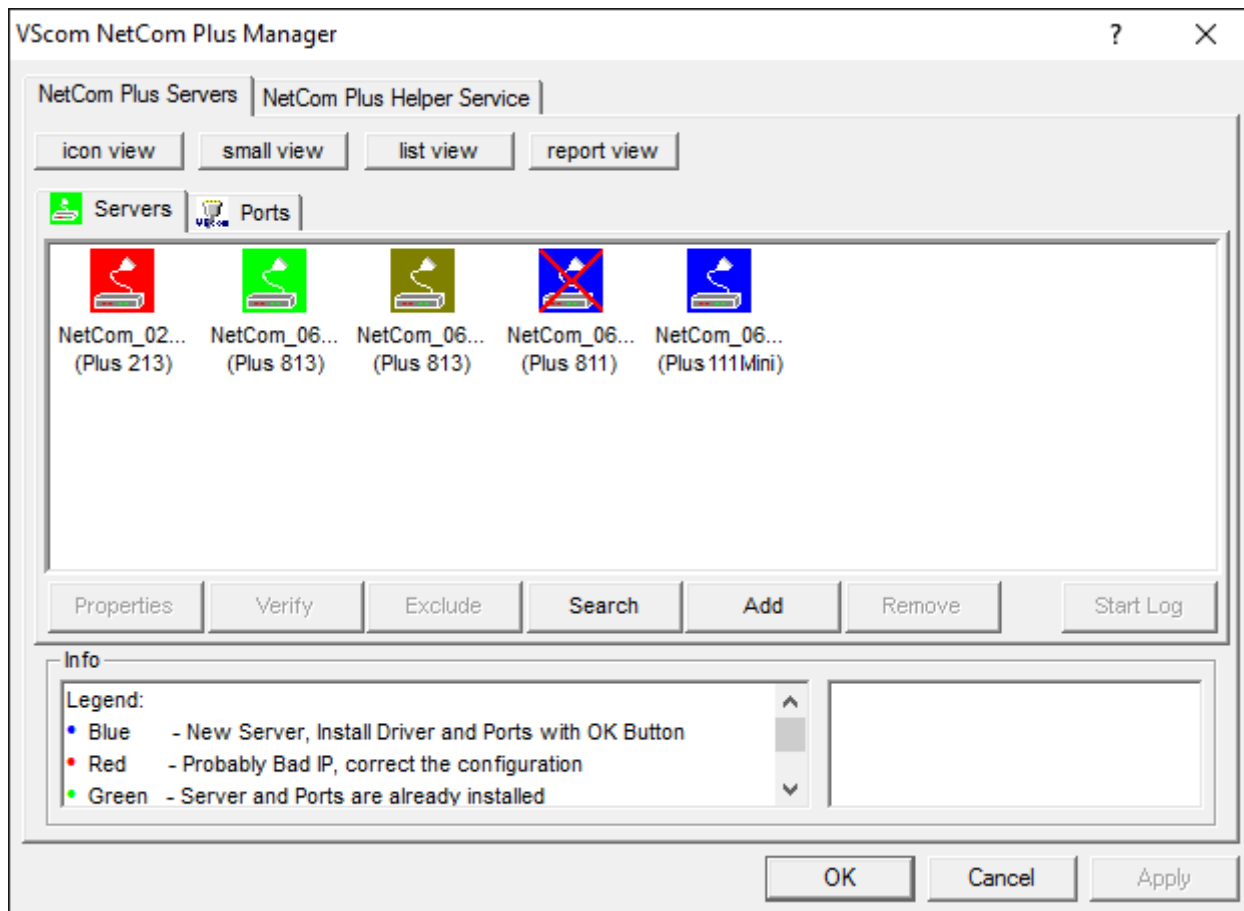


Front and Back Side
[>Back](#)



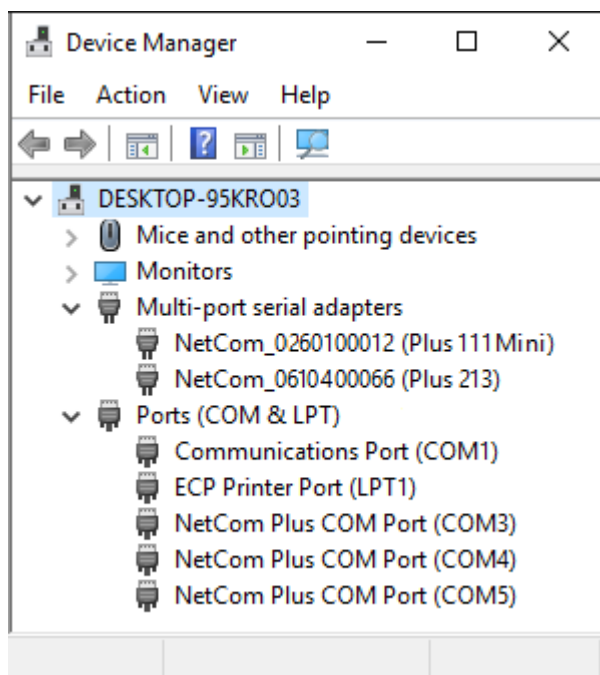
NetCom Plus Manager

[>Back](#)



NetCom Plus in Device Manager

[>Back](#)



Serial Port in Web Interface

[>Back](#)

Port 1	
PortType (current)	rs232
Baud Base	60000000
PortType ?	<input type="text" value="rs232"/>
Baudrate ?	<input type="text" value="38400"/>
Manual ?	38400
FlowType ?	<input type="text" value="None"/>
DataBit ?	<input type="text" value="8"/>
Parity ?	<input type="text" value="None"/>
StopBit ?	<input type="text" value="1"/>
RxFifoLength	1024
RxTriggerLevel ?	<input type="text" value="224"/>
TxFifoLength	1024
TxTriggerLevel ?	<input type="text" value="800"/>

Wall Mount Kit

[>Back](#)



Remote Access option

[>Back](#)



(2019 Jan 02)